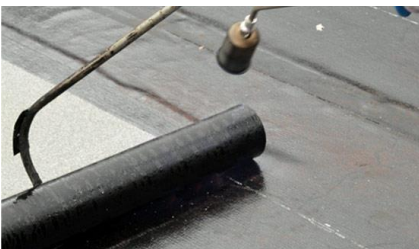


Description

A high performance multi-ply prefabricated self-adhering bituminous waterproof sheet membrane consisting of a highly elastic bituminous compound, internally reinforced with a non-woven polyester and topped with a 100 micron, cross laminated HDPE film. It also incorporates at bottom side with a quick release siliconized film which is removed just prior to the application to the tack coat primed substrate to ensure clean adhesion. Then immediately protect from UV light and application and mechanical damage during back filling by the application of protection board.

Uses

The ideal membrane for damp proofing foundations, bridges, viaducts and tunnels, sub-grade and various building and civil works as well as industrial application.



Advantages

- 1.6 – 2.0 mm thick, cold applied
- Extremely flexible
- The cross lamination provides dimensional stability, high tear strength, puncture and impact resistance to the membrane
- Excellent resistance to aggressive soils and contaminated ground water
- Ease, fast application
- Good adhesion to primed concrete substrate

Technical Data

PROPERTIES	RESULTS	UNIT	TEST METHOD
Thickness	1.6	mm	ASTM D-5147
Length	10, 15 & 20	Mt.	ASTM D-5147
Width	1	Mt.	ASTM D-5147
Mass/unit area	1.85	Kg/mt ²	ASTM D-5147
Polyester	160	g/ mt ²	UEAtc M.O.A.T.30
Glass fiber		g/ mt ²	
Coating Asphalt : Type	SBS Modified		
Tensile strength (L&T) @23@±2	200/180 kg/cm ² for Film ASTM D 882	N/5cm	DIN 52123 UEAtc M.O.A.T.30
Elongation (L&T) @23@±2	>500/400 N for Film ASTM D 882	%	DIN 52123 UEAtc M.O.A.T.30
Tear resistance (L&T) @23@±2	600/500 N for film ASTM D 1004	N	ASTM D-4073 ASTM D-5147
Puncture Resistance	>260	N	ASTM E 154
Cold Flexibility	>-18	°C	ASTM D-5147
Water Absorption	0.14	%	ASTM D-5147
Peel Off Strength		Mpa	ASTM D 1000
To Primed Concrete	1.9	Mpa	
To Self	1.9		

Storage

Shelf life 12 months if stores in a cool dry store away from sources of heat. In the original unopened packing.

Packing

BITUFIX-P produced in 10-20 meters, special lengths are available upon request. The rolls are vertical palletized and shrink wrapped. The rolls must be transported and kept in stock always in a vertical position.

Priming

Coat the surface with Solvent Base Bitumen Primer and allow to dry overnight. All surfaces must be re-primed if left for more than 24 hours prior to the application.

Surface Preparation

Concrete should be clean, free of voids, honeycomb coarse aggregates, and any traces of curing compound to be removed. The concrete should be minimum 8 days old.

